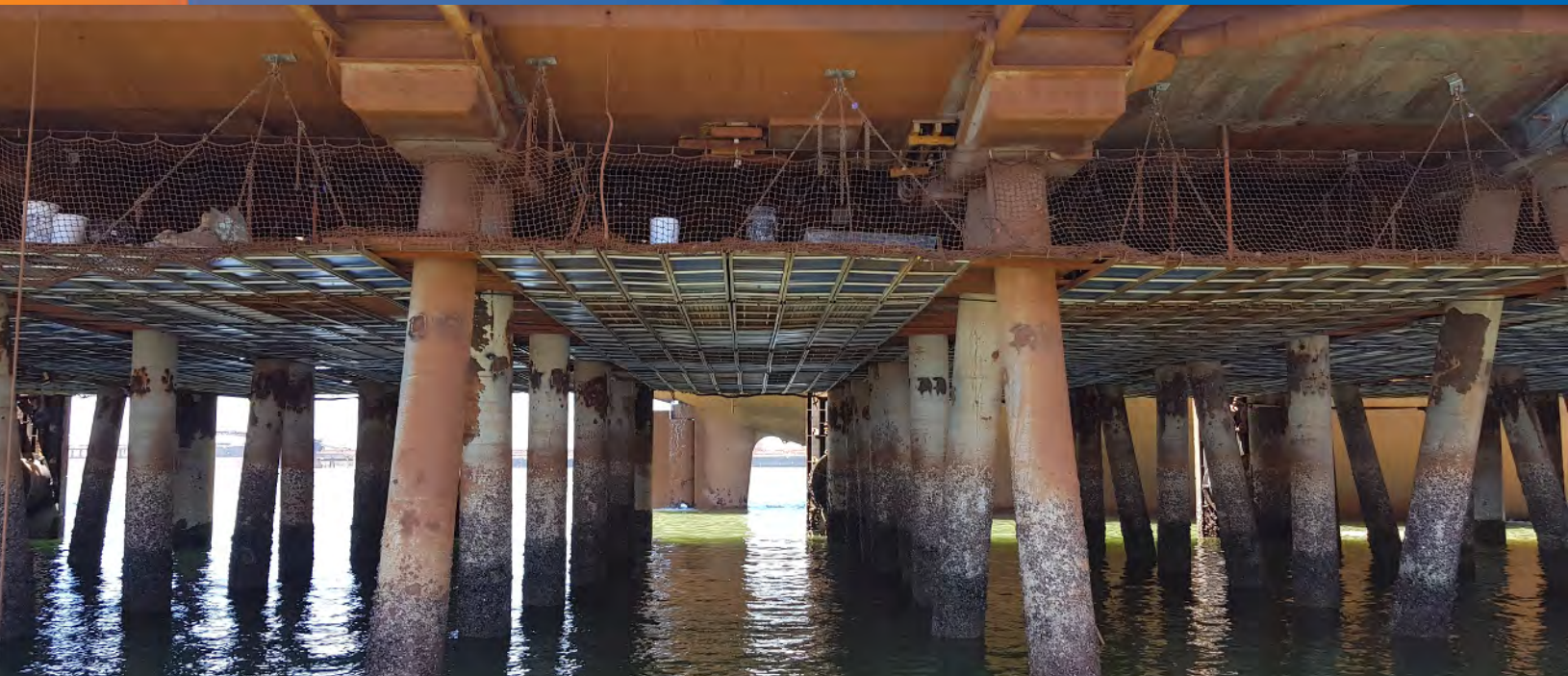


WEB DECK

Temporary Work Platform



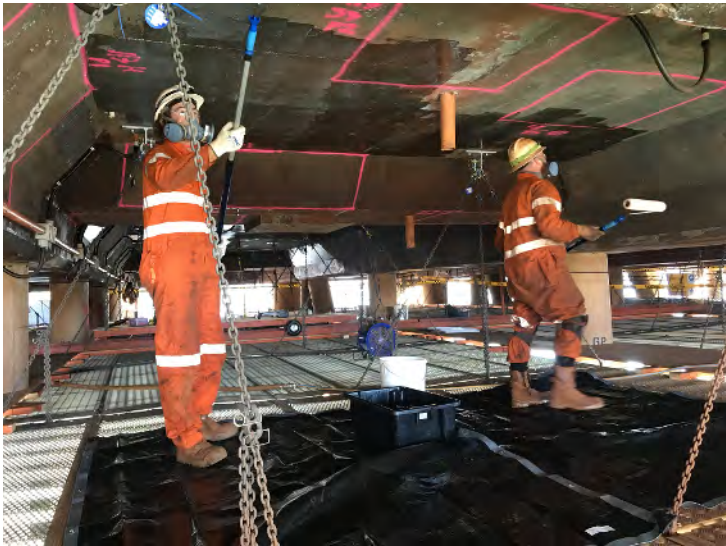
EQUIPMENT SPECIFICATION



OVERVIEW

Primary Specification	
Platform Weight	14kg / m ²
Loading Capacity	0.5 kN- 5.5 kN UDL / m ²
Material	Extruded aluminium with impregnated FR Plywood or aluminium grating
Netting	FR polyester netting for edge protection, low deflection

Description
<p>WEB Deck provides a solid, stable working platform which feels like scaffolding. Users are able to carry out a variety of heavy work tasks off the deck as if it were scaffolding. The simple, lightweight yet strong design allows fast installation and dismantling. It features a patented hook and clasp system which anchors the deck panels to tensioned catenary cables. These are then secured and stabilised by additional suspension chains.</p> <p>The system is suitable for many work areas including the underdeck of jetties, rigs, bridges and pipe racks. Each installation is fully engineered for the load requirement of your project and the structure it is rigged from.</p> <p>The WEB Deck System is fully compliant with PUWER 1998 as a temporary work platform. To ensure world class safety, WEB Deck is installed by TAMS using qualified Rope Access Technicians specifically trained as WEB Deck installers.</p>



The data on this specification is published in good faith and for general information purpose only. It does not warrant its accuracy or completeness and to the full extent allowed by law excludes liability.