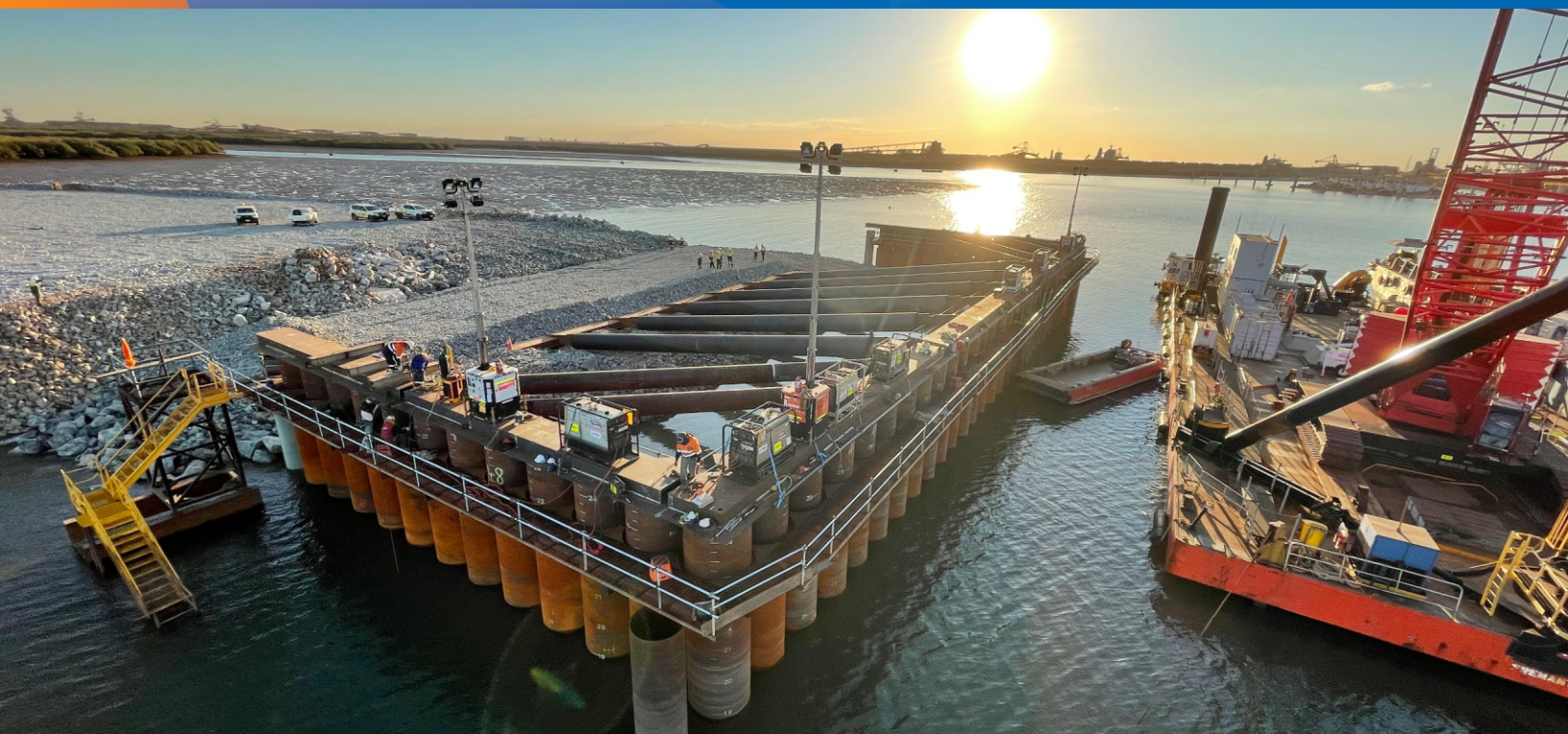


# FMG MOF WHARF LUMSDEN POINT

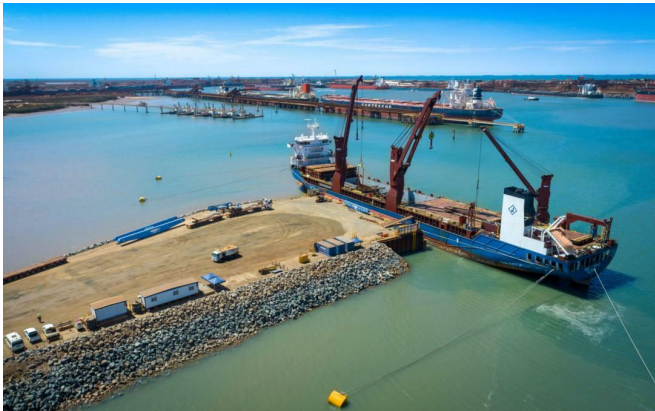


## PROJECT SPECIFICATION SHEET



### OVERVIEW

Project Name	FMG MOF Wharf
Client	Fortescue Metal Group
Site	Lumsden Point, Port Hedland WA
Duration	May - August 2021
Main Equipment	TAMS 9 Barge c/w 300t Crane, Juntan 20SB Hammer IHC S280, AMS Perth Barge, Weerde Island Barge, Tug Pegasus, Tug Quenda, Multicat AMS Boss



### DETAILS

In 2021 Fortescue Metals Group (FMG) and Pilbara Ports Authority required a solution to provide a marine offloading facility in Port Hedland for offloading of prefabricated process plant modules and other heavy equipment for the FMG Iron Bridge Magnetite Project.

TAMS Group were engaged to Design & Construct a 60m wide tubular clutched pile wall at Lumsden Point that would provide the berth face for the marine offloading facility (MOF).

TAMS fast-tracked the procurement and delivery of the clutched piles and other piling materials direct to Port Hedland, including the bespoke design and fabrication of a multi pile piling gate.

TAMS scope included installation of:

- 18no. x 1016mm OD x 20mm WT Anchor Piles
- 56no. x 1625mm OD x 50mm WT Clutched Tubular Piles
- Pinned Deadman Piles
- Fully Welded Capping Beam
- Installation of Mooring Spread
- Installation of 6no. Gravity Base Navigation Aids